

## Master the Enterprise Process Life-cycle

Enterprise business processes involve people, systems, and information, often across multiple departments and lines of business. The distributed, compartmentalized nature of these business processes makes it challenging for enterprises to adapt them to address competitive pressures, regulatory changes, market conditions, and customer demands. Metastorm BPM® provides the foundation for enterprise-wide business process management, uniting knowledge workers, systems, and information to improve business innovation, agility, and performance.

Every business process has a life-cycle, from discovery of the need to create or change a process through deploying, managing, and optimizing the process as requirements evolve. Metastorm BPM provides everything the enterprise needs to manage the complete process life-cycle and exploit unique business processes for competitive advantage.

Metastorm BPM empowers knowledge workers, managers, and executives to contribute to enterprise success in measurable ways. It provides the catalyst to implement process-centric thinking, enabling business and IT to collaborate like never before to create a more agile, innovative enterprise



## Key Features

### ▪ Advanced Design Environment

- Collaborative Integrated Design: Use a single environment to design all aspects of your business process. Business Analysts can analyze, design, and simulate the process and build the UI. While developers can work with complex data access, rule and integration implementation.
- Comprehensive Metamodel: Our robust, comprehensive metamodel allows you to model all aspects of your process: Organizations, Goals, KPIs, Rules, Processes, UI Forms, etc.
- Highly Extensible: Our add-in based infrastructure means that you can extend both the metamodel and corresponding design environment or use 3<sup>rd</sup> party frameworks that add additional functionality.

### ▪ Leading BPM Platform

- Stateless Design: Our Process Engine is based on proven technology and is capable of scaling up and out with our stateless design.
- Open Framework: Our SOA based design will allow you to utilize your existing infrastructure. For example, you can quickly enable your processes to be document centric by incorporating your existing DMS with our Open DMS Framework. Or you can maintain users, roles, and groups natively within your existing directories or systems with our Open Authentication infrastructure.
- Open Repository: Access to process metadata, runtime work items, and historical data is simple with our open and documented repository.

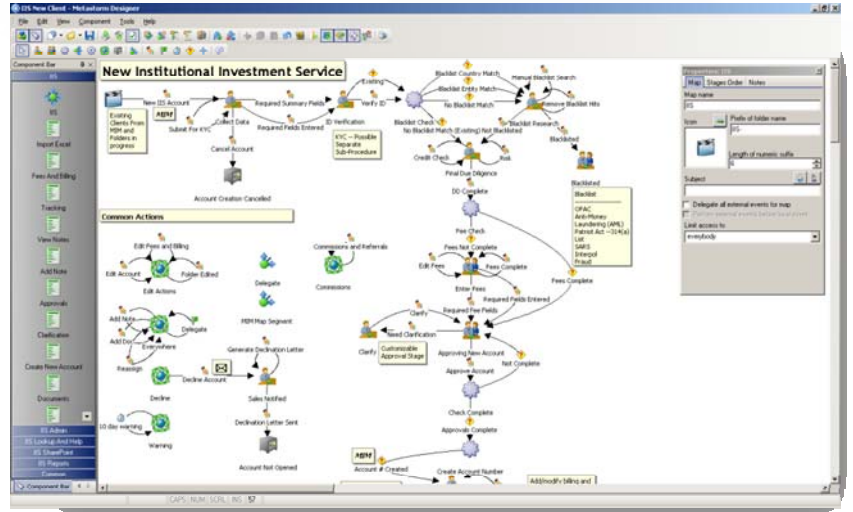
### ▪ Support for Diverse Client Perspectives

- ASP .Net: Our ASP .Net client is a fully feature web based interface allowing users access to their Metastorm To Do, Watch, Blank Forms, and Administrative Forms for all of their Metastorm processes.
- SharePoint and JSR-168 Portals: Quickly build robust portal pages that are specific to your process or user role with our web parts for SharePoint or portlets for Java.
- Office 2007: Our unique Office 2007 client will not only enable your users to access work items from within their productivity tools, but it will enable them to bind processes and process data directly to the work items they create.

# Model

## The **Metastorm Process Designer**

enables process owners, managers, and IT professionals to create graphical models of their business processes. Metastorm's process modeling methodology encourages modeling based on how a business person might describe a process verbally or in writing, turning process modeling from a technical chore into an enjoyable individual or team exercise. The result is an executable process model that is deployed to the **Metastorm Process Engine**.

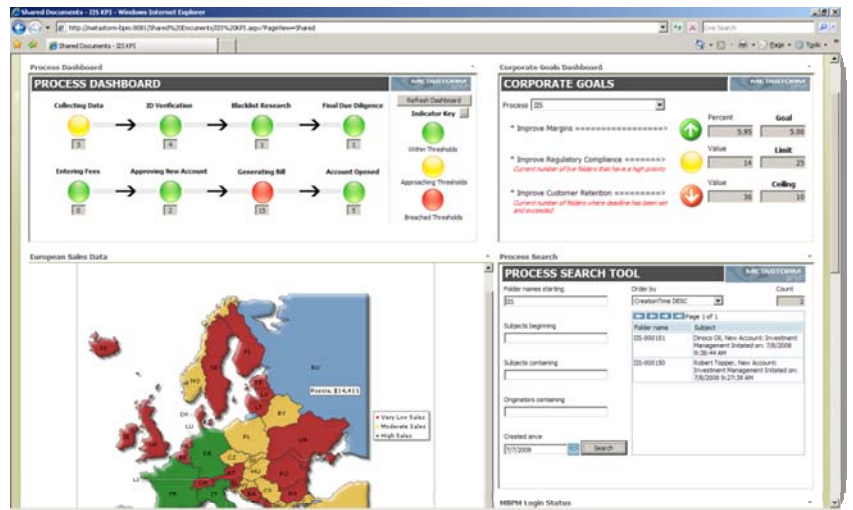


# Automate, Integrate, Deploy

**Metastorm Integration Manager** and the **Metastorm Process Orchestrators** within the Designer enable rapid integration between business processes and the applications and databases that support them. Any level of integration is supported, from basic read-only data retrieval to complex, multi-platform application and data integration. Metastorm integration components ensure you can leverage existing assets across all of your business processes in a true service-oriented architecture. The **Metastorm Process Engine** automatically deploys processes modeled in the Designer and acts as the orchestrator of all human- and system-based actions defined in the process. The Engine captures all events and process-related data in the Process Repository, providing an essential inventory of information that serves as the foundation for compliance audits, reporting and analysis and process optimization.

# Empower and Manage

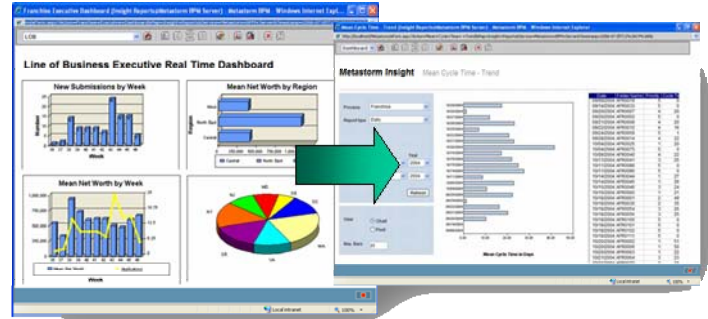
**Metastorm Dashboards** and user interface options – including web, SharePoint and JSR-168 portals, Microsoft Office, and Blackberry interfaces – ensure that everyone essential to process success can easily participate in processes and manage their work. Whether it is a business user, customer, supplier, or IT administrator, each process participant is empowered to manage critical items while being freed from mundane tasks that can now be handled by the automated process.



This results in greater productivity, more time for idea generation, and increased innovation.

## Monitor and Report

**Metastorm Insight** enables process owners, participants, executives, and management to monitor and report on processes and act on process events. Insight provides customizable dashboards that can be tailored to display key performance indicators relevant to a specific person, department, or line of business. Insight also provides powerful ad-hoc and scheduled reporting capabilities, enabling users at any level to create customized reports that include drill-down capabilities to individual process elements and the ability for time-phased trend analysis and predictive forecasting.



## Analyze and Improve

**Metastorm Advance Simulation** drives process optimization and reduces risk by enabling organizations to test “what if” scenarios before making production process changes. Using the Designer, process owners change the process model to reflect proposed or expected changes. They can then simulate how the new version of the process will perform, using historical process data from the Process Repository and/or business assumptions. Multiple changes can be simulated and compared, enabling process owners to identify changes that bring the most value and easing the change management burden on all parties.

## Product Prerequisites - Overview

### Operating Systems

- Windows XP (Professional edition SP2)
- Windows Server 2003 SP1 (Standard)
- Windows Server 2003 SP2 (Standard)
- Windows Server 2003 R2 (Standard)
- Windows Server 2003 R2 SP2 (Standard)
- Windows Server 2003 64-bit (Engine & Web Client only)
- Windows Vista (Business and Enterprise) (Design environment only)

### Web Servers (ASP.Net Client)

- Microsoft IIS 5.1
- Microsoft IIS 6
- Microsoft IIS 7

### SharePoint (Client for Office)

- Windows SharePoint Services 2.0 SP2
- Windows SharePoint Services 3.0
- Microsoft Office SharePoint Server 2007

### Databases

- Microsoft SQL Server 2000 (SP4)
- Microsoft SQL Server 2005 Express (Development/Testing only)
- Microsoft SQL Server 2005 SP1
- Microsoft SQL Server 2005 SP2
- Microsoft SQL Server 2005 64-bit
- Oracle 10G R1 (version 10.1.0.2.0)
- Oracle 10G R2 (version 10.2.0.1.0)

For more information, visit <http://www.metastorm.com>.

© Copyright 2008, Metastorm Inc. All rights reserved. Enterprise Process Advantage, Metastorm BPM, Metastorm Discovery, Metastorm DNA, Metastorm Enterprise, Process Pod and ProVision are either registered trademarks or trademarks of Metastorm Inc. Other product, service and company names mentioned herein are for identification purposes only and may be trademarks of their respective owners.  
10.29.2008.